



Presentation

Shanghai Pro-Seminar on “HELICOPTER & WORLD EXPO’2010”


Shanghai Helicopter Center (SHC) As Platform
for Helicopter Business Development in Yantzu Delta

Presented by

Tomoo Nakayama, President and CEO
ITC-Aerospace, Inc. & ITC-Leasing, Inc.

Shanghai, China

Dec 13, 2005





Current situation: Sky closed for civil helicopters for 45 years
Advise to: Chinese Government to establish *Shanghai Helicopter Center (SHC)* as special zone for civil helicopter business development.




Shanghai Helicopter Center (SHC)

- + SHC Project Study Group formed by HAI members in Japan

- + Special Development Zone as China's 1st helicopter business model and experimental operation

- + Shanghai Delta being the center of the world's manufacturing industries

- + Shanghai Delta being the most matured area to accept Helicopter Operations. The World's Top Industries have plants in the Delta, that needs helicopters as the most efficient and swift means of transportation between airports and their plants



- + Tax and duties to be exempted for SHC and its JVs for an initial 10 year period from their starting

- + Orderly development, such as safe flying, rules and regulations, etc. to be assumed under the framework of SHC

- + Technical know-how transfer and training be assured by the “Operating Partners” through JVs

Site selection of Shanghai Helicopter Center

1

Site
Candidate

**Rong-Hua Airport in the center of Shanghai City
(Shanghai's 1st airport established in 1929, has 1,000 m
long runway)**

2

Heliport
Structure

**120,000M² as heliport surface, 12 to 15 hangers for
helicopter business operators flying 30 at start, will
increase 200 to 300 helicopters in Shanghai Delta in 5
years, becoming the world's biggest helicopter center**

3

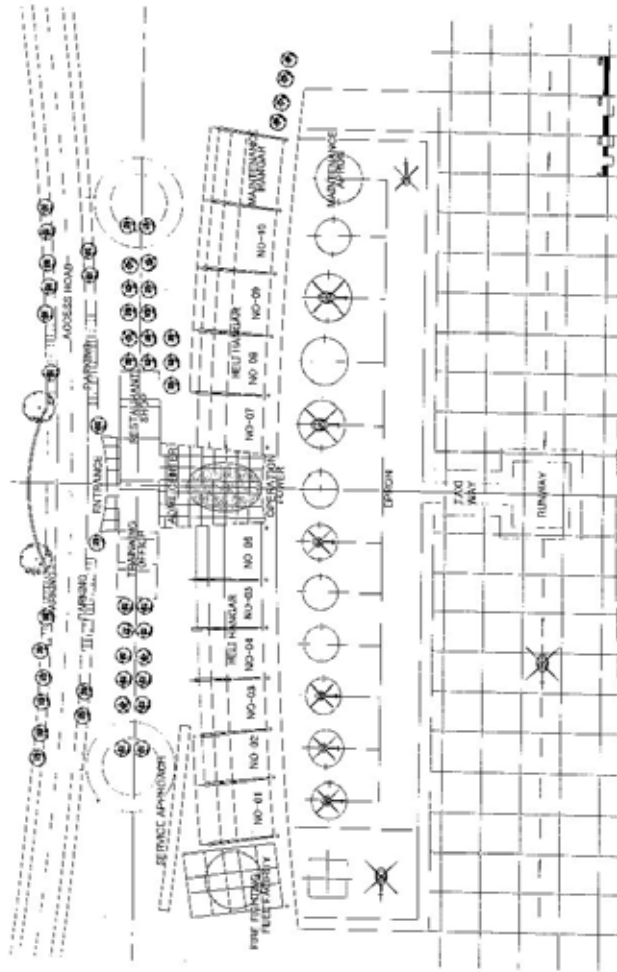
Investment
Amount &
Funding
Sources

**Investment at US\$25 million for construction of the
ultra modern facilities, financed by the World
investors including IFC shares in the SHC**





Shanghai Helicopter Center (SHC)



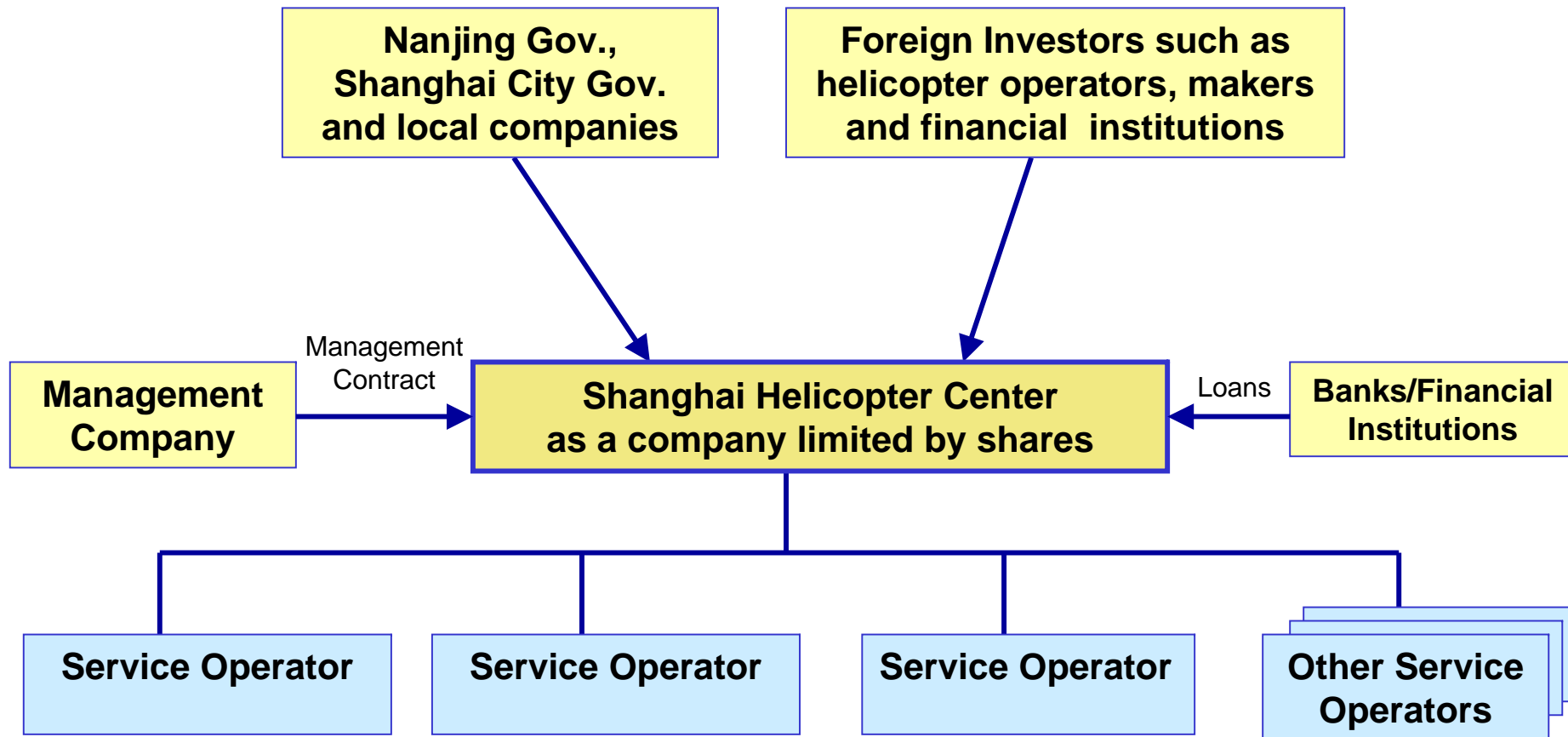
SHC Plan



Tokyo Heliport

Structures for SHC as heliport management and helicopter operation at SHC

1. Structures of SHC



2. Business plan for SHC

Unit: US\$

		Item	Annually	
Operating P/L	Net Sales	Fuel Service Fee	3,085,714	
		Business Management Fee	3,240,000	
		Others (Shop, Restaurant etc)	1,348,571	
		Total Net Sales	7,674,285	
	Cost of Sales	Refuel Fee	2,777,142	
		Others (Shop, Restaurant etc)	68,571	
		Depreciation	557,071	
		Total Cost of Sales	3,402,784	
			Total Sales Income	4,271,501
	Sales & General Mgt Fee	Personnel Fee	97,142	
		Equipment Lease Fee (Car, Computer, Desk etc)	72,000	
Equipment Maintenance Fee		77,714		
Others		43,428		
Total Sales & General Mgt Fee		290,284		
		Operating Profit	3,981,217	
Nonoperating P/L	Nonoperating Profit	Dividend	1,129,428	
	Nonoperating Expense	Interest	1,237,937	
		Current Profit	3,872,708	

3. Business plan for Helicopter Operations under JVs with SHC

Unit: US\$

Item		Annually		
Operating P/L	Net Sales	Helicopter Operating Revenue	2,160,000	
		Total Net Sales	2,160,000	
	Cost of Sales		Helicopter Lease Fee	308,571
			Fuel Fee	308,571
			Personnel Fee	164,571
			Business Management Fee	324,000
			Others	355,428
		Total Cost of Sales	1,461,141	
		Total Sales Income	698,859	
	Sales & General Mgt Fee		Personnel Fee	74,285
		Sales & General Mgt Fee	172,800	
		Total Sales & General Mgt Fee	247,085	
	Operating Profit	451,774		
Nonoperating P/L	Nonoperating Income		0	
	Nonoperating expense		0	
Current Profit		451,774		

Selection of helicopter operators under JV

- 1 Charter Passenger Flight Service
- 2 Heli - Commuter Service
- 3 Emergency Medical Service (EMS)
- 4 Electronic News Gathering (ENG)
- 5 Fire Fighting
- 6 Police and Anti-terrorist Monitoring and Surveys
- 7 High-way Control and Monitoring
- 8 Off-shore Logistical Transport
- 9 Maintenance and Repair shop
- 10 Aerial Patrol Services
- 11 Aerial Survey and Photography
- 12 Pilot Training and Flight School
- 13 Helicopter Finance and Leasing